



CAD DIMENSIONS Inc.

Your Partner in Design Solutions

MOVE THE SOLIDNETWORK LICENSE MANAGER



**AUTHORIZED
Reseller**

3S SOLIDWORKS

CONTENTS

INSTALLING A SOLIDNETWORK LICENSE MANAGER SERVER	3
Preparing for Installation	3
System Requirements.....	3
Locate Installation Media.....	3
Installing.....	3
Install SNL Manager On the New Machine	3
Modify Firewall Settings	6
Firewall Exceptions and Ports.....	6
Add New Server to Client Machines	6
Transfer the License off the Old SolidNetWork License Manager Server.....	7
Activate the License on the New SolidNetWork License Manager Server	8
Connectivity Tests.....	9
SolidNetWork License Manager Server Machine Tests.....	9
SolidNetWork License Manager Client Machine Tests.....	9

INSTALLING A SOLIDNETWORK LICENSE MANAGER SERVER

Preparing for Installation

SYSTEM REQUIREMENTS

Verify that the new machine meets the [System Requirements](#) for SolidNetWork License Manager Server.

LOCATE INSTALLATION MEDIA

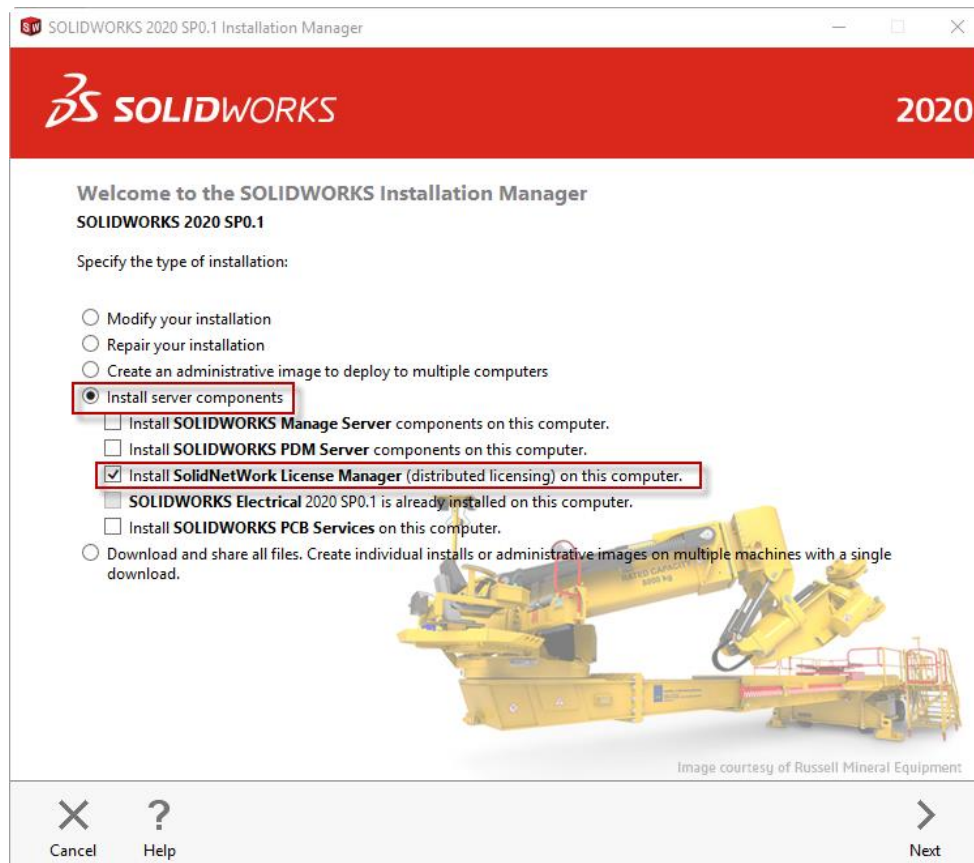
Prior to installing SOLIDWORKS, you will want to locate your SOLIDWORKS install media. The media can come from a provided disk or by downloading. If you would like to request a DVD follow the steps in this link: <https://solidworks.dsgraphics.com/solidworksmediakit/>

Note: There is a 45 day turnaround for DVDs.

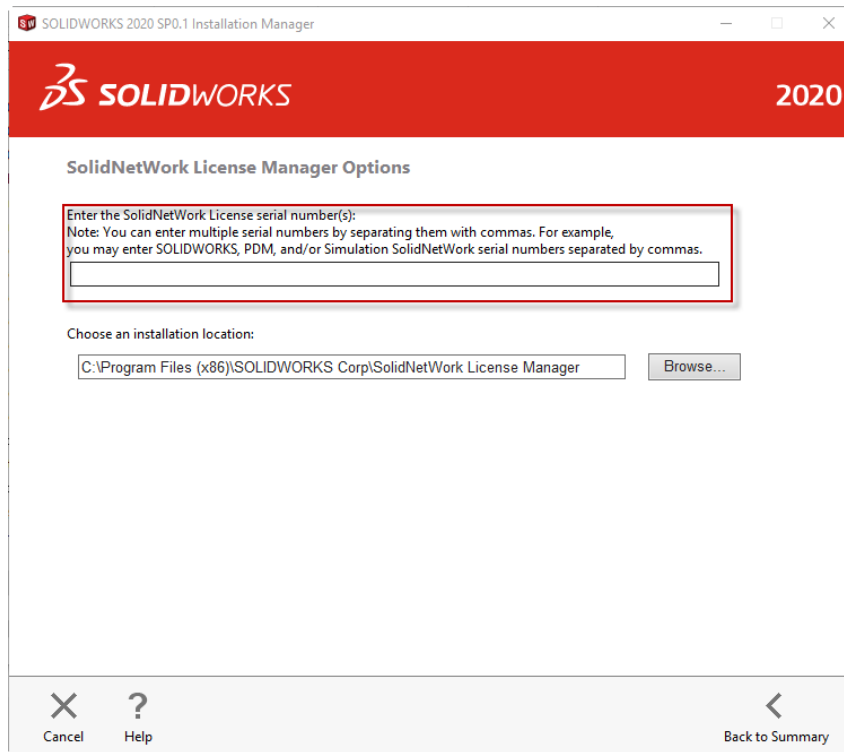
Installing

INSTALL SNL MANAGER ON THE NEW MACHINE

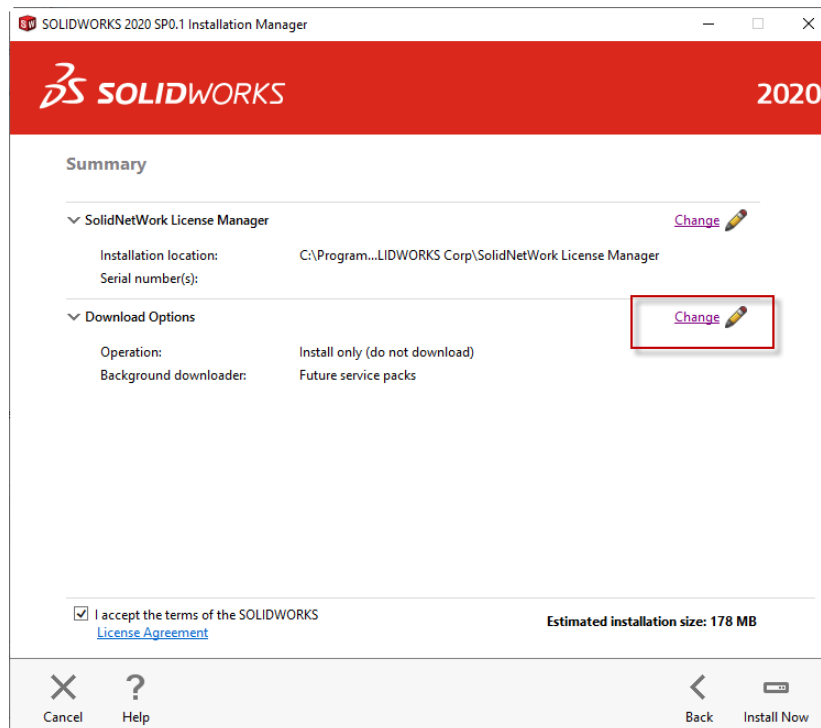
1. To initiate the SOLIDWORKS installation on the server machine, do one of the following:
 - a. Insert DVD: To install on a local computer from disk, insert the appropriate disk into the computer's disk drive. Setup should auto run.
 - b. Open Download Directory: To install from a download directory, navigate to the directory and double-click setup.exe.
2. Choose **Server Products** radio button and check the box for **Install SolidNetWork License Manager**. Click **Next**.



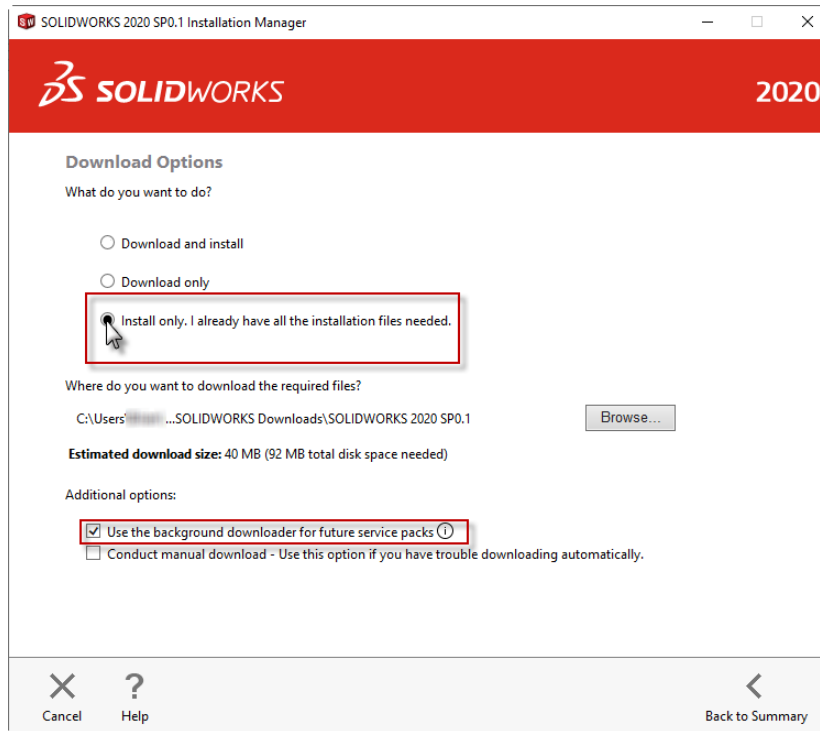
3. Enter your SolidNetwork License serial number. Click **Next**.



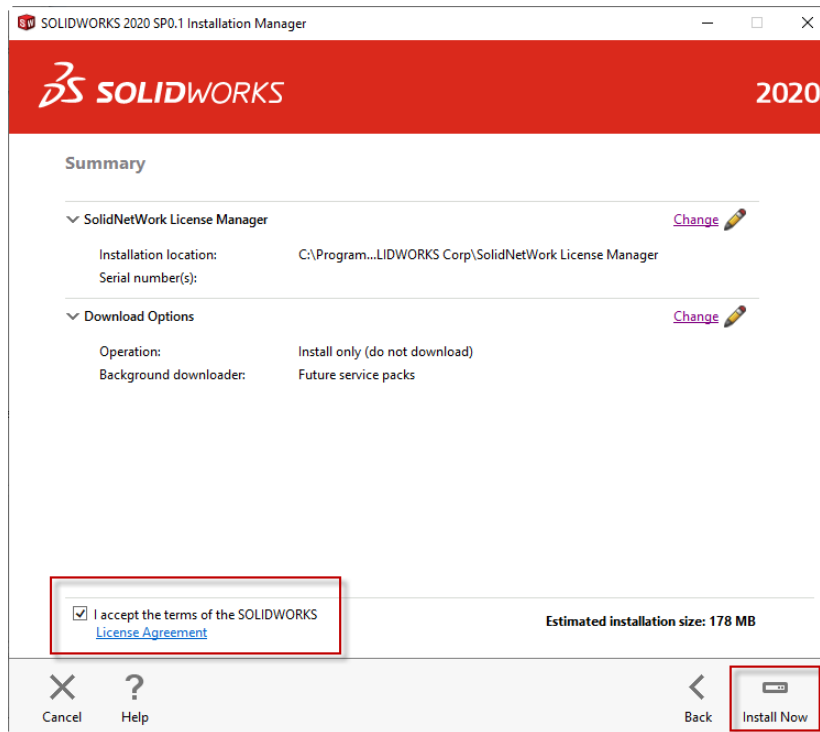
4. OPTIONAL STEP: Disable Background Downloader. SOLIDWORKS Background Downloader performs automated file downloads (i.e. when a new Service Pack release is found) using background processes. When the download completes, you are asked whether you want to install now, postpone the install, or remove the download. To disable: from the Summary page, click on **CHANGE** next to Download Options



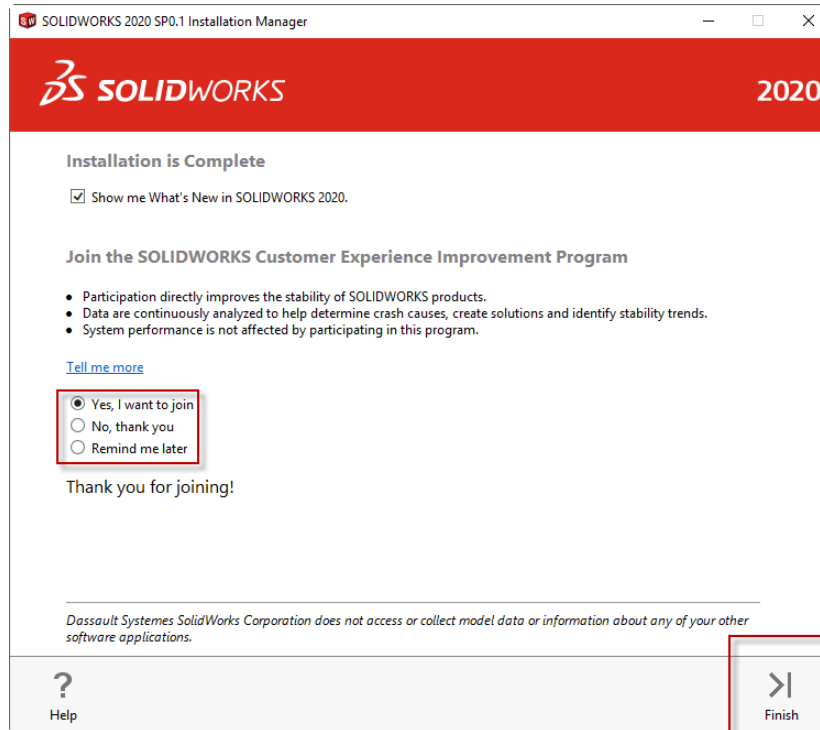
To disable background downloader, uncheck the box next to **Use the background downloader for future service packs**. Click **Back to Summary**.



5. Click to accept SOLIDWORKS terms and then click **Install Now**. Wait for the installation to complete.



6. Select **Yes** or **No** to participate in the **SOLIDWORKS Customer Experience Improvement Program**. Click **Finish**.



Modify Firewall Settings

If there is a firewall on the machine, you will want to configure the firewall to avoid issues when using the SNL Manager.

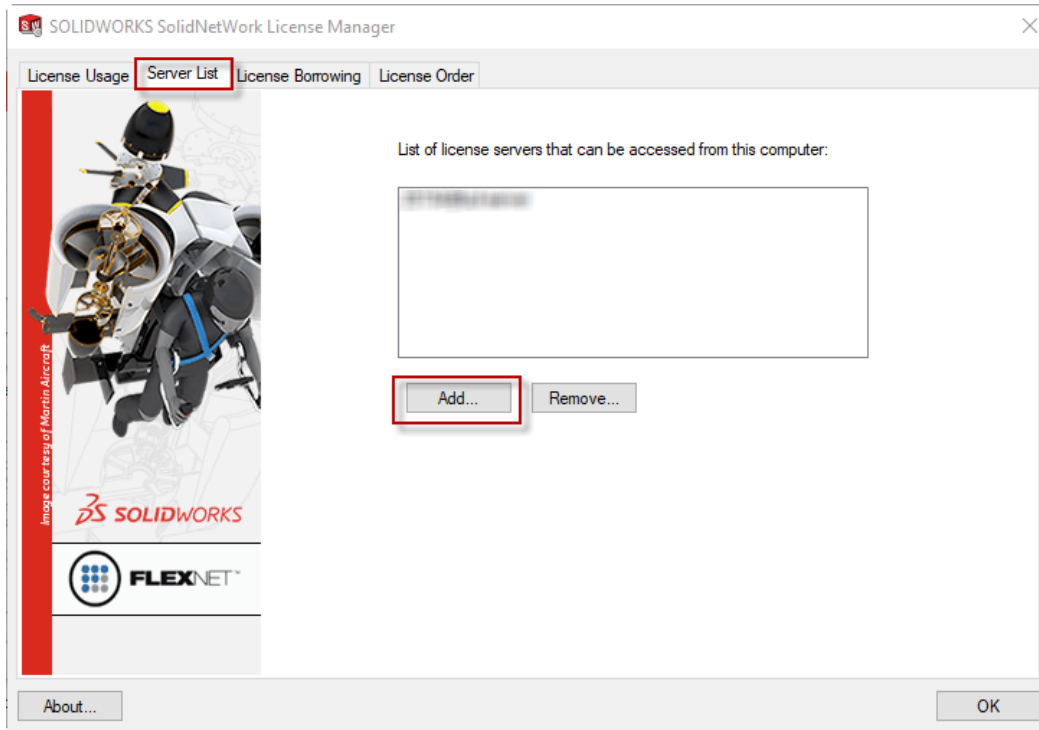
FIREWALL EXCEPTIONS AND PORTS

1. Add TCP/IP ports 25734 and 25735 to the firewall exception list.
2. Add the following programs to the firewall exception list (Imgrd.exe and sw_d.exe that are stored in the SNL installation folder).

Add New Server to Client Machines

1. On the client machine go to **Start > All Programs > SOLIDWORKS 20XX > SOLIDWORKS Tools > SolidNetwork License Manager Client**

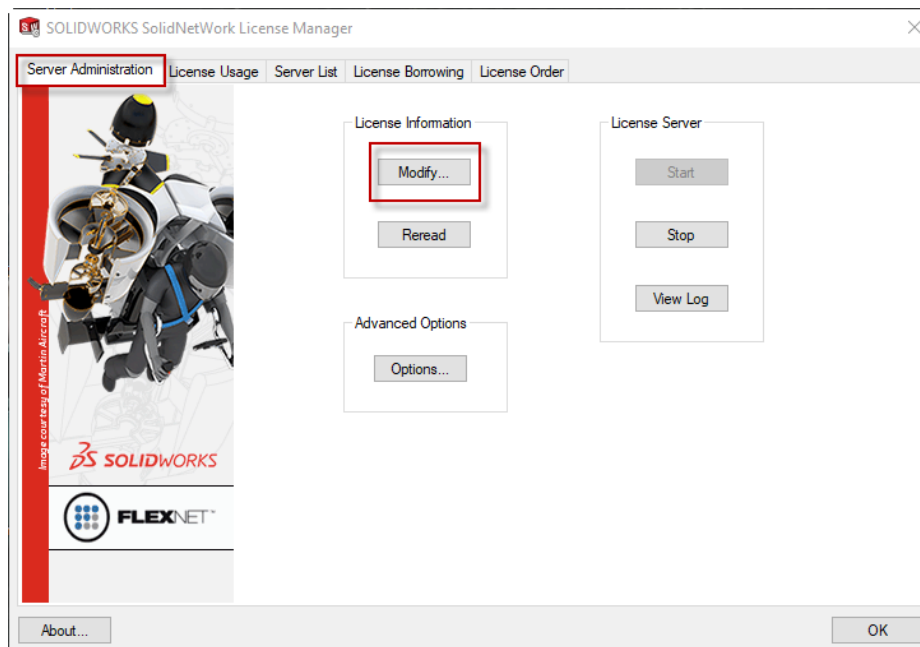
2. Select the **Server List** tab and choose **Add...**



3. Type in the server information: *portnumber@servername* Note: The default port number is 25734.

Transfer the License off the Old SolidNetWork License Manager Server

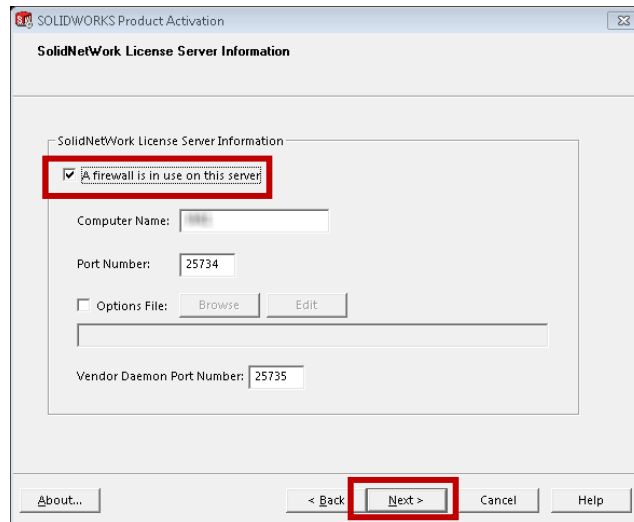
1. Launch the **SOLIDWORKS SolidNetwork License Manager Server** from the Start Menu on the old machine.
2. Select the **Server Administration Tab > Modify** and then choose **Move your product license(s) to a new/upgraded computer.**



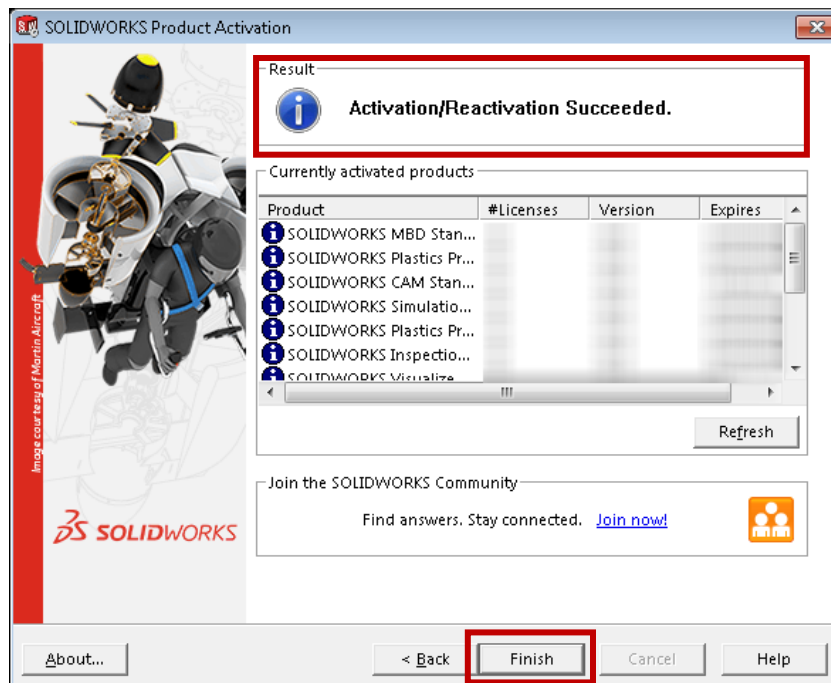
3. You will be asked if you want to transfer over the internet or through email. It is recommended that you choose **Automatically over the Internet**.
4. Once the process has completed, a dialog box will appear with the result **Transfer Succeeded**. Click **Finish**.

Activate the License on the New SolidNetWork License Manager Server

1. Launch the SOLIDWORKS SolidNetwork License Manager Server from the Start Menu.
2. If not prompted to activate, go to the **Server Administration** Tab, choose **Modify**, and then **Activate/Reactivate**. Take note of the server name and port number. If there's a firewall on the server, be sure to check the box and leave the default port number. Click **Next**.



3. You will be asked if you want to update over the internet or through email. It is recommended that you choose **Automatically over the Internet**.
4. Once the process has completed, a dialog box will appear with the result **Activation/Reactivation Succeeded**. Click **Finish**.



Connectivity Tests

If SOLIDWORKS will not launch from the client machines you will need to check for connection issues between the SolidNetWork License Manager Server and the SolidNetWork License Manager Client.

SOLIDNETWORK LICENSE MANAGER SERVER MACHINE TESTS

1. Verify the SolidNetWork License Manager Server is started.
2. Check the License Usage tab to make sure there are free licenses available.

SOLIDNETWORK LICENSE MANAGER CLIENT MACHINE TESTS

1. Check to see that the server has been added to the client machine. See: **Add Server to Client Machines**.
2. Check the SolidNetWork License Manager Client Usage tab to see if SOLIDWORKS acknowledges the fact there are free licenses.

If there are no free license, check the TCP/IP connectivity between the client and server. There are two tests that must be run to verify this. First, open a Command Prompt on the client machine and perform the following:

3. Type ping <server_name> A message must be received informing that the ping is successful.
4. Type telnet <server_name> <port_number> where <port_number> is the port being used by the SolidNetWork License Manager. The default port value is 25734. If the connection was successful, the DOS prompt will go blank showing only a blinking cursor.

Both of these tests must pass. If either one or both fail, there is not sufficient TCP/IP connectivity between the client and the server for a SolidNetWork License Environment to function correctly.

NEED ADDITIONAL SUPPORT?

If you have an existing case, please contact the Application Engineer you are working with; otherwise [submit a new case online](#) or see our [local office listing](#) for additional contact information.