



CAD **DIMENSIONS Inc.**

Your Partner in Design Solutions

SOLIDWORKS INSTALLATION



AUTHORIZED
Reseller

SOLIDWORKS

CONTENTS

ABOUT THIS GUIDE	3
INSTALLING SOLIDWORKS.....	3
Before Installing SOLIDWORKS	3
System Requirements.....	3
Locate Installation Media	Error! Bookmark not defined.
Temporary Settings	6
Installing SOLIDWORKS.....	7
After Installing SOLIDWORKS.....	15
Activating a Standalone License	15

ABOUT THIS GUIDE

- ★ This guide has been developed to simplify the SOLIDWORKS installation process. Actual steps may vary based on version, method of installation, licensing and personal preferences or those of your company.
- ★ If there is a link, you will be directed to the corresponding SOLIDWORKS help page, which will provide more detailed information on that specific topic.

INSTALLING SOLIDWORKS

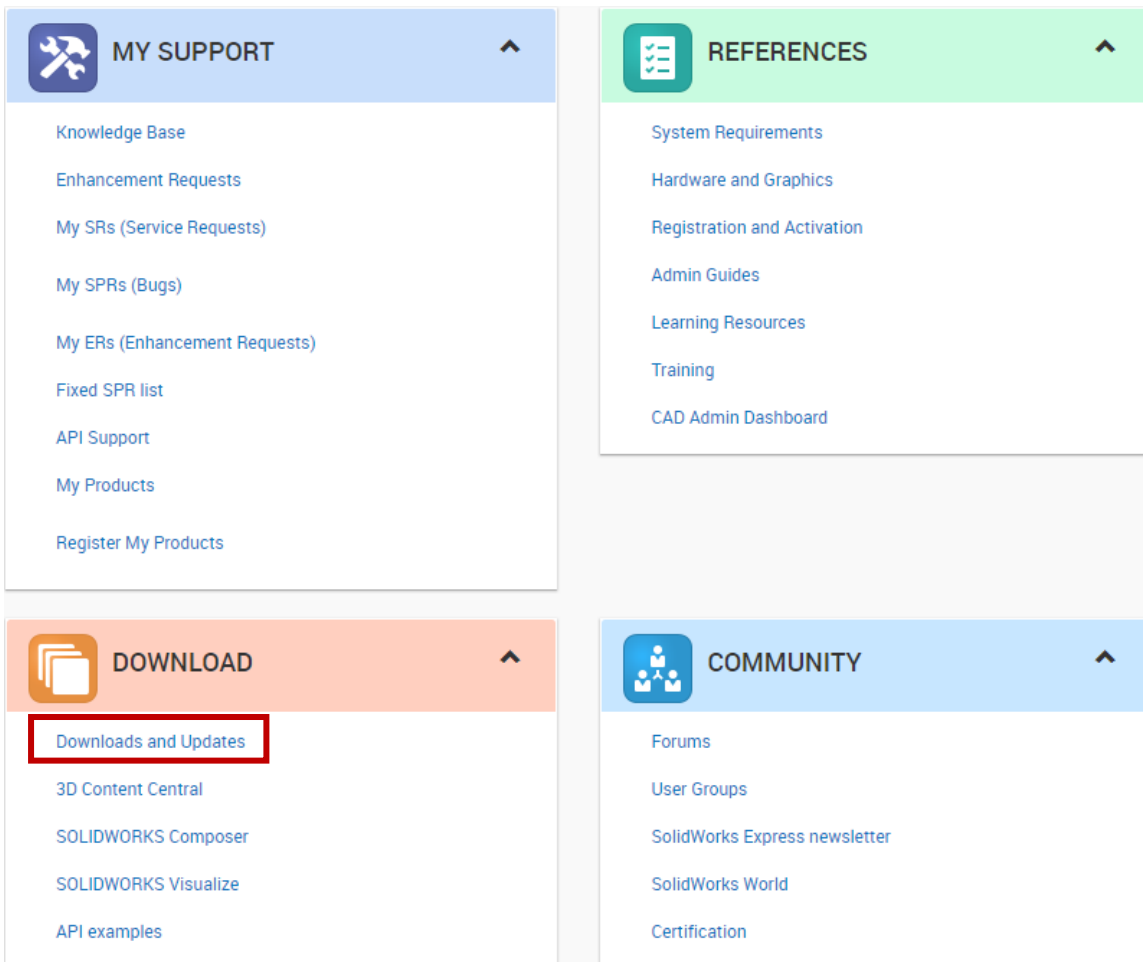
Before Installing SOLIDWORKS

SYSTEM REQUIREMENTS

Verify that the machine to be used meets the **System Requirements** for the version of SOLIDWORKS you will be installing.

INSTALLATION MANAGER FROM A DOWNLOAD

1. Go to the [Customer Portal](#) and log in.
2. Under the Download section, select **Downloads and Updates**.



The screenshot displays a grid of four navigation panels in the Customer Portal. The top-left panel is 'MY SUPPORT' (blue header) with links: Knowledge Base, Enhancement Requests, My SRs (Service Requests), My SPRs (Bugs), My ERs (Enhancement Requests), Fixed SPR list, API Support, My Products, and Register My Products. The top-right panel is 'REFERENCES' (green header) with links: System Requirements, Hardware and Graphics, Registration and Activation, Admin Guides, Learning Resources, Training, and CAD Admin Dashboard. The bottom-left panel is 'DOWNLOAD' (orange header) with links: Downloads and Updates (highlighted with a red box), 3D Content Central, SOLIDWORKS Composer, SOLIDWORKS Visualize, and API examples. The bottom-right panel is 'COMMUNITY' (light blue header) with links: Forums, User Groups, SolidWorks Express newsletter, SolidWorks World, and Certification.

3. Select the version of SOLIDWORKS you will be installing.

Download new versions, service packs, and add-ins.

Select Version:

SOLIDWORKS ONEPART FREE TOOLS

Product	Version	Service Pack	Operating System	Released
SOLIDWORKS Products	2020	0.1	Win7/Win10 64-bit	11/14/2019
Product	Version	Service Pack	Operating System	Released
SOLIDWORKS Activation Wizard	2020	0.1	Win7/Win10 64-bit	11/14/2019
SOLIDWORKS Extended Reality	2020	Beta 4	Win10 64-bit	10/11/2019
SOLIDWORKS Media (1 of 2)	2020	0.1	Win7/Win10 64-bit	11/14/2019
SOLIDWORKS Media (2 of 2)	2020	0.1	Win7/Win10 64-bit	11/14/2019

4. Select the appropriate SOLIDWORKS Edition.

Download new versions, service packs, and add-ins.

Select Version:

SOLIDWORKS ONEPART FREE TOOLS

Product	Version	Service Pack	Operating System	Released
SOLIDWORKS Products	2020	0.1	Win7/Win10 64-bit	11/14/2019
Product	Version	Service Pack	Operating System	Released
SOLIDWORKS Activation Wizard	2020	0.1	Win7/Win10 64-bit	11/14/2019
SOLIDWORKS Extended Reality	2020	Beta 4	Win10 64-bit	10/11/2019
SOLIDWORKS Media (1 of 2)	2020	0.1	Win7/Win10 64-bit	11/14/2019
SOLIDWORKS Media (2 of 2)	2020	0.1	Win7/Win10 64-bit	11/14/2019

5. Click **Accept the Agreement & Continue**.

SOLIDWORKS Download EULA

[English](#) [CHS](#) [CHT](#) [Czech](#) [French](#) [German](#) [Italian](#) [Japan](#)
[Korean](#) [Polish](#) [Spanish](#) [Turkish](#) [Russian](#) [Portuguese/Brazil](#)

Dassault Systèmes SolidWorks Corporation License, Online and Subscription Services Agreement

The terms and conditions that follow and any other terms that are specific terms relating to identified Software or Online Services and published at <http://www.3ds.com/terms/ost>, hereby incorporated by reference, set forth a legal agreement ("Agreement") between you (either an individual or an entity), the end user, and Dassault Systèmes SolidWorks Corporation, a Delaware corporation with its principal place of business at 175 Wyman Street, Waltham, Massachusetts 02451 USA ("DS SolidWorks"), relating to different offerings consisting of (i) the computer software known as SOLIDWORKS® and certain other software licensed by DS SolidWorks (which may include, without limitation, the SOLIDWORKS Simulation line of analysis products, SOLIDWORKS Composer, and the SOLIDWORKS line of product data management products in all countries) and/or content, including databases, 2D and 3D models, in machine-readable form (the "Software") and/or (ii) online services, i.e., online access to and use of the Offering and other related services (the "Online Services") (collectively, the "Offering"). The term "Offering" includes and these terms and conditions also apply to (i) any updates or upgrades to the Offering that you may receive from time to time under a subscription service or other support arrangement, (ii) any add-in modules to the Offering you may order and install from time to time, and (iii) software from third parties such as the Adobe® PDF library that is incorporated into the SOLIDWORKS Offering. You may not load or use the Offering in any computer or copy it without a right to do so from DS SolidWorks. DS SolidWorks hereby offers you a non-

6. Click **Download**.

- Subscription Services
- Technical Support
- Downloads
 - Installation FAQs
- General Hotfixes
- Learning Resources
- Hardware & System Requirements
- SOLIDWORKS Certification
- SOLIDWORKS Training

Download and Install SOLIDWORKS Products Using the Installation Manager

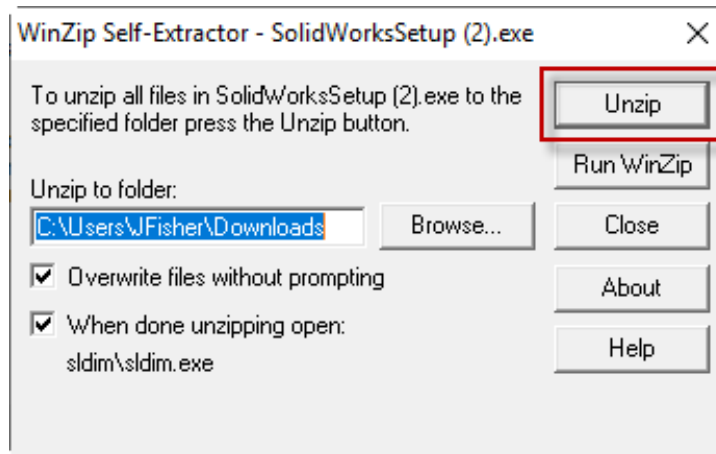
Download SOLIDWORKS 2020 Service Pack 0.1

Follow the instructions in the Installation Manager for individual installations, administrative images, and download-only options.

The Installation Manager automatically downloads and installs everything required to run your SOLIDWORKS products in one operation. If you are unable to download using the Installation Manager, you can download and install components individually using the [manual download method](#).

|

7. Click the **SolidWorksSetup.exe**. A window will open, choose **Run**. Another window will open, choose **Unzip**.



8. When the files have been unzipped you will see a summary page. Choose **OK**. The summary page will close and the SOLIDWORKS Installation Manager will launch automatically.

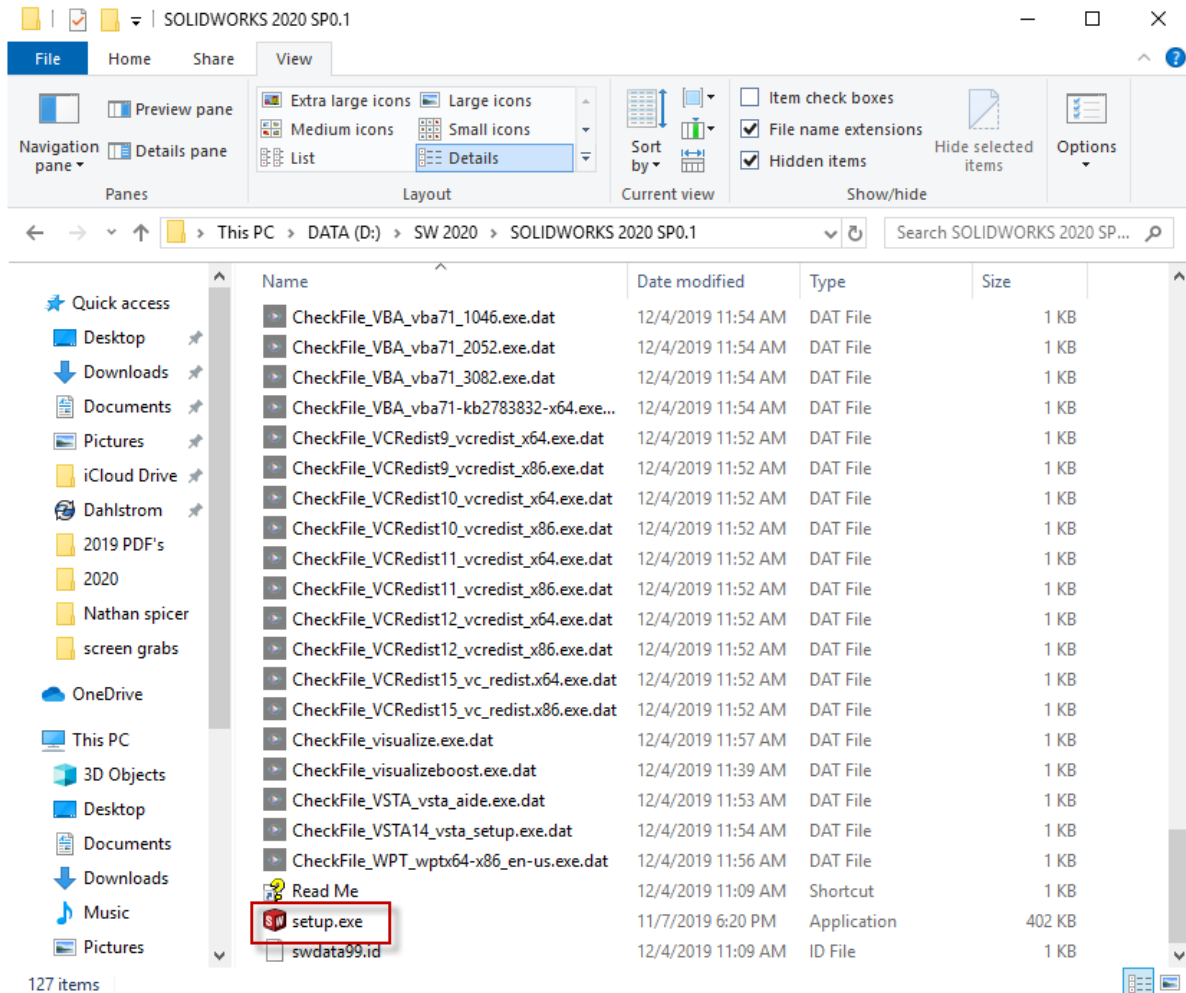
Note: If you close the Installation Manager, you can reopen it by browsing to the location the files were unzipped at and selecting the Setup.exe.

TEMPORARY SETTINGS

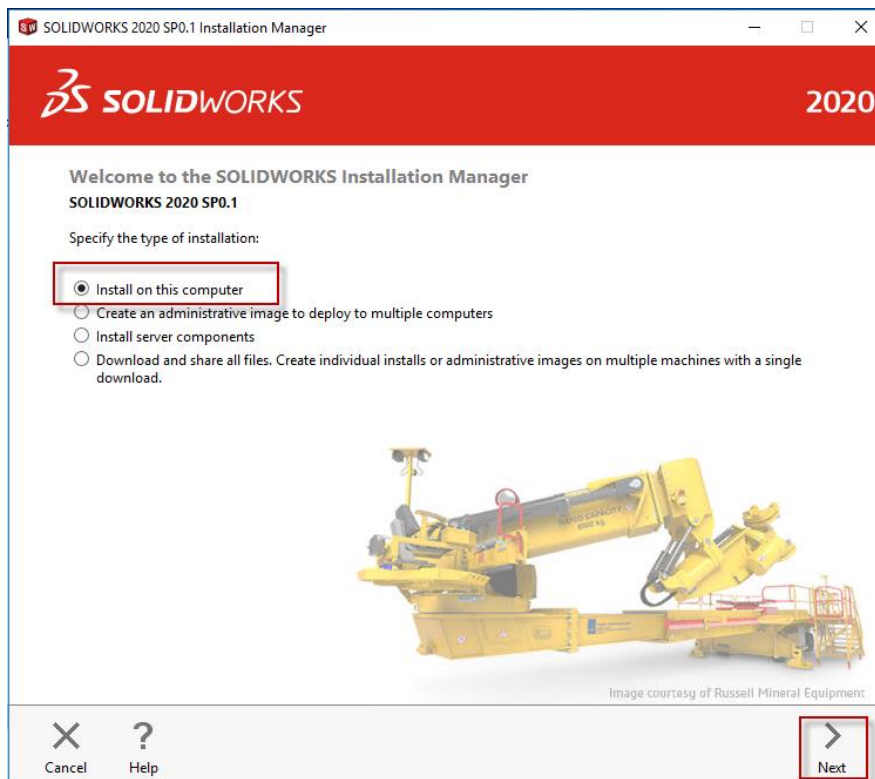
It is recommended that you temporarily disable anti-virus software and turn User Account Controls to “Never Notify” prior to installation.

Installing SOLIDWORKS

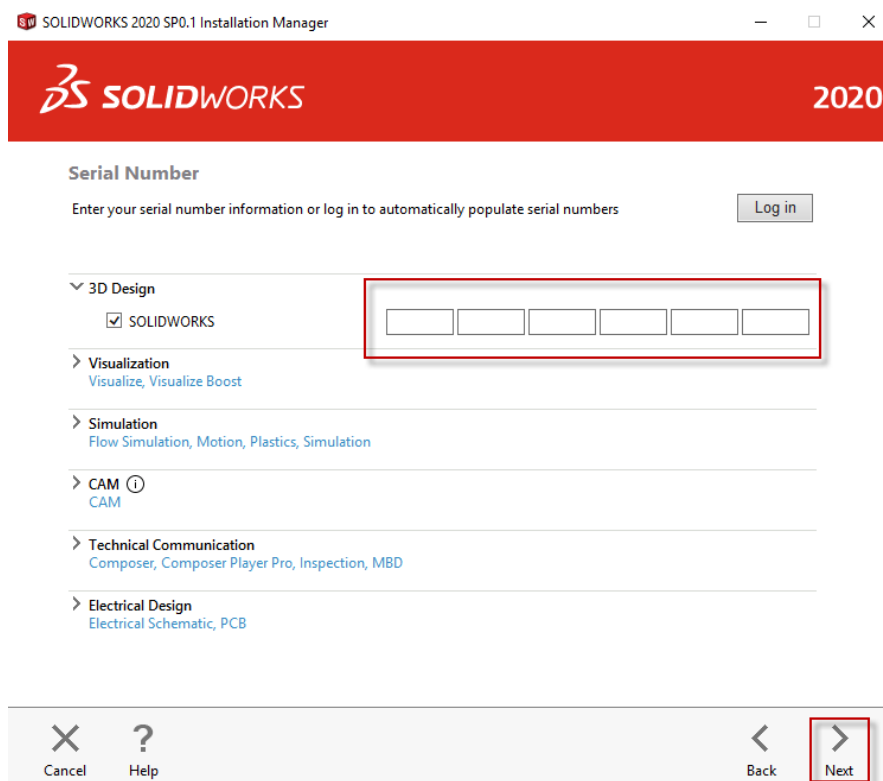
1. To **initiate the SOLIDWORKS installation** on the machine, do one of the following:
 - a. **Insert DVD:** To install on a local computer from disk, insert the appropriate disk into the computer's disk drive. Setup should auto run.
 - b. **Open Download Directory:** To install from a download directory, navigate to the directory and double-click **setup.exe**.



2. Select the type of installation, **individual installation or administrative image**, and click **Next**.
 - a. Individual installation is used on one or a few computers. This is the most common type of installation.
 - b. Administrative Image is meant for use by the system administrator to deploy multiple installations on many computers on a network

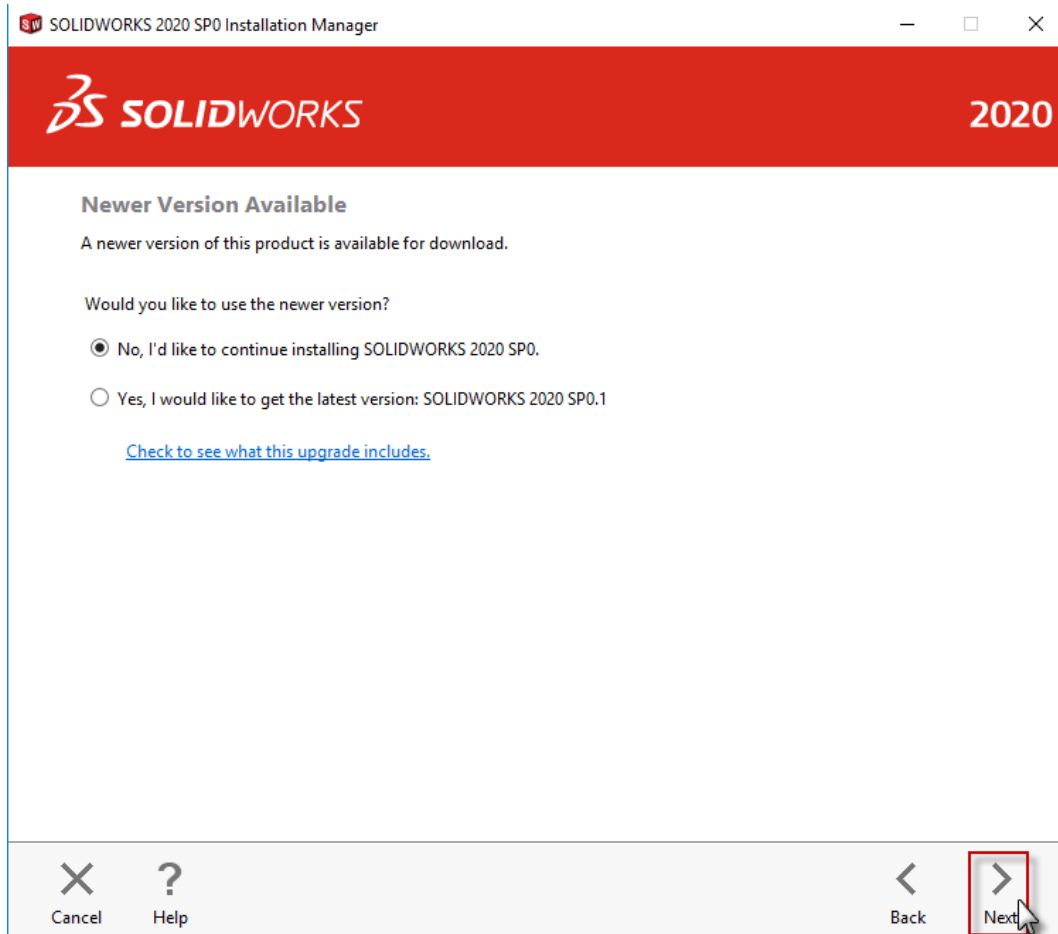


3. Enter the **serial number** information in the appropriate space. Expand and check the boxes for any additional components serial number(s). Click **Next**.



4. If the Installation Manager detects a **newer version available** of SOLIDWORKS, you can choose to install the version contained on the original installation DVD/download, or you can choose to download and install the newer version. Click **Next**.

Note: This will download the newer version which will increase the installation time. This can be done at a later date if desired.

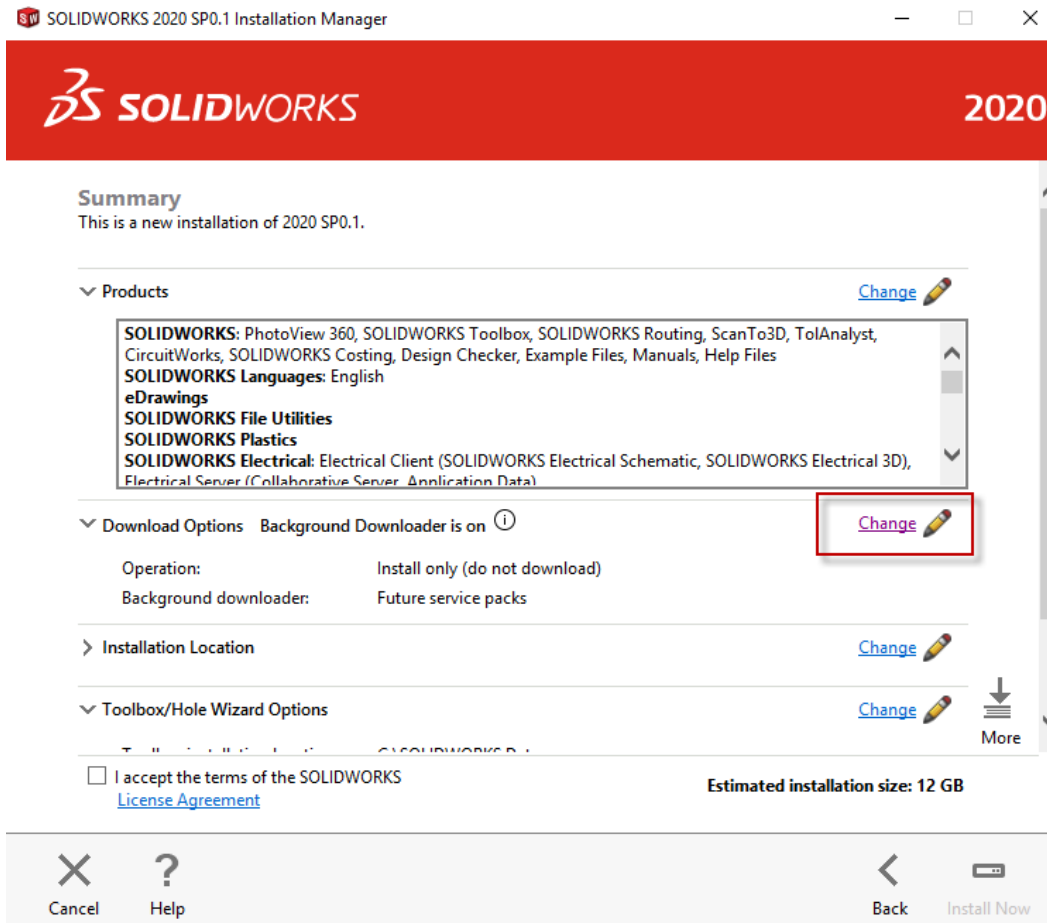


5. OPTIONAL STEP

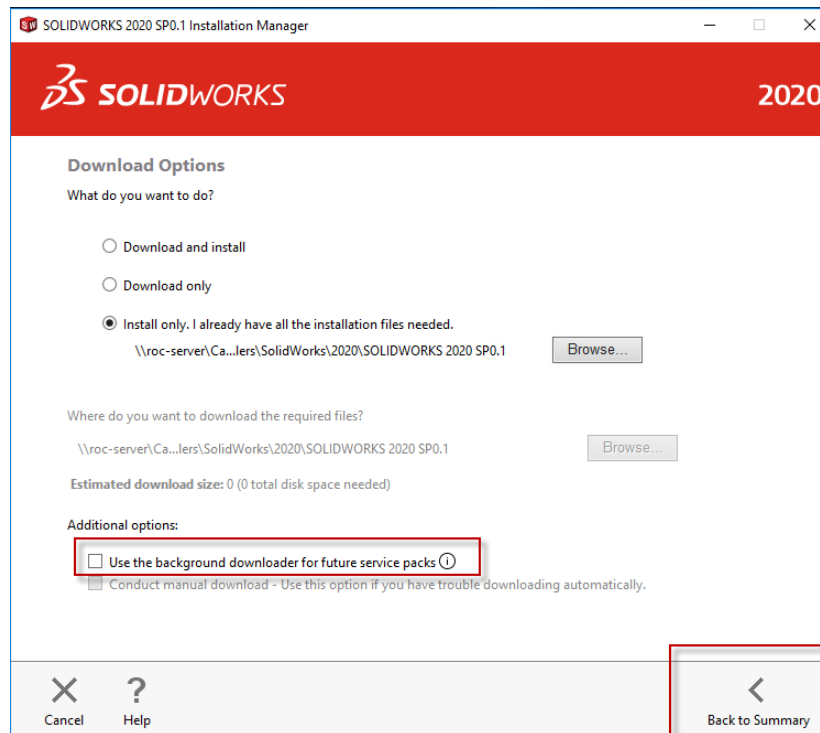
SOLIDWORKS Background Downloader performs automated file downloads (i.e. when a new Service Pack release is found) using background processes. When the download completes, you are asked whether you want to install now, postpone, the install, or remove the download.

Disable the background downloader.

- a. Click on **Change** next to Download Options.



- b. Uncheck the box next to **Use the background downloader for future service packs**. Click **Back to Summary**.

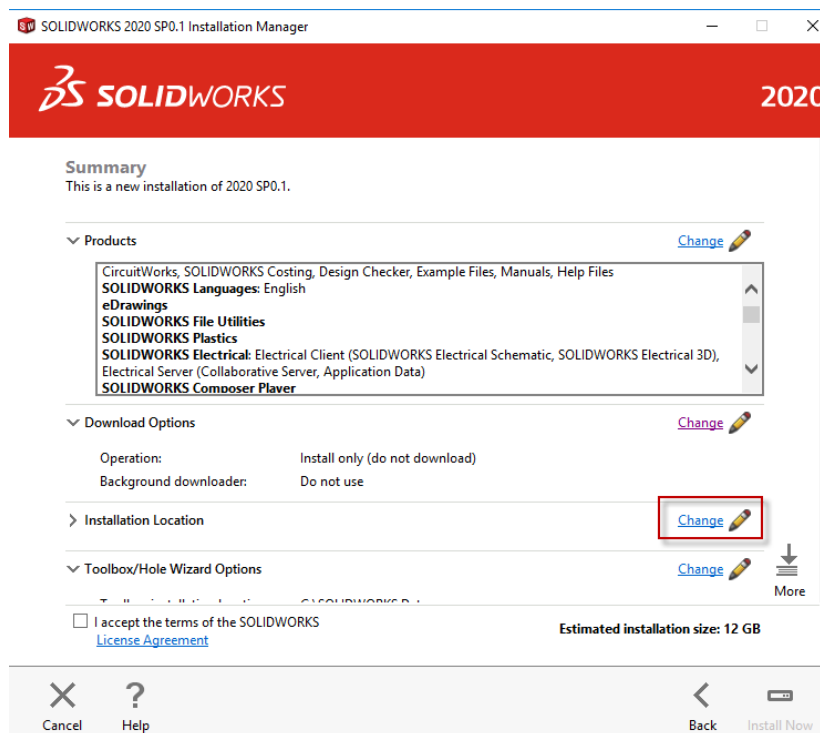


6. RECOMMENDED STEP

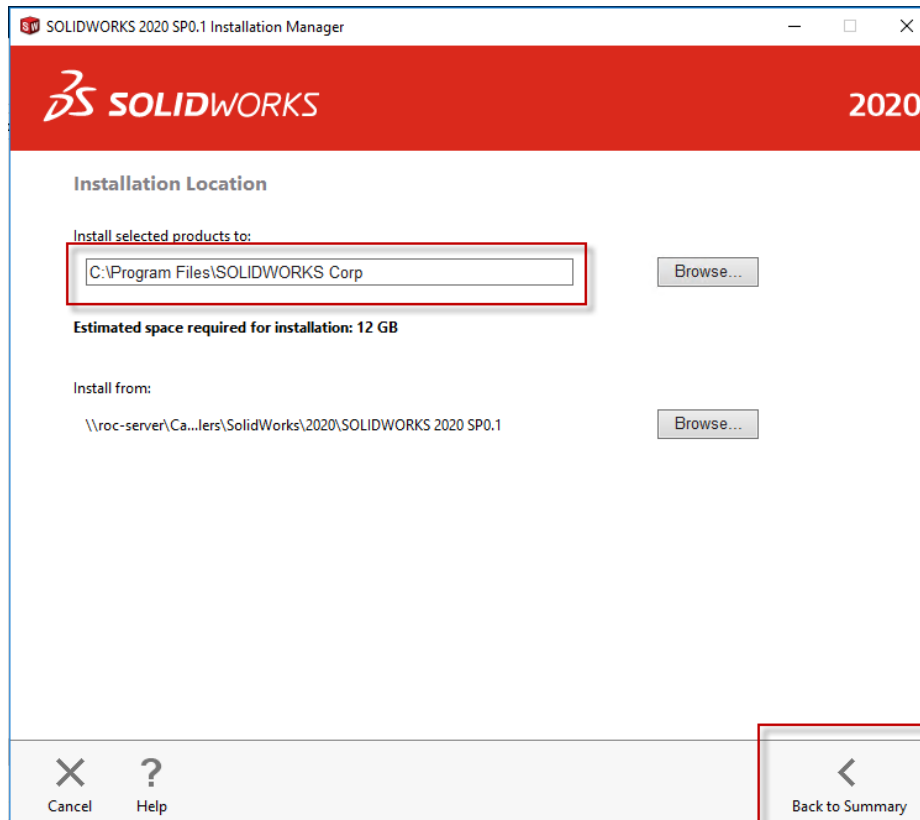
Changing the **Installation Location** is not required, but is recommended for ease of administration.

Change the installation location.

- a. Click **Change** next to Installation Location.



- b. Type **2020** at the end of the path name and then click **Back to Summary**.

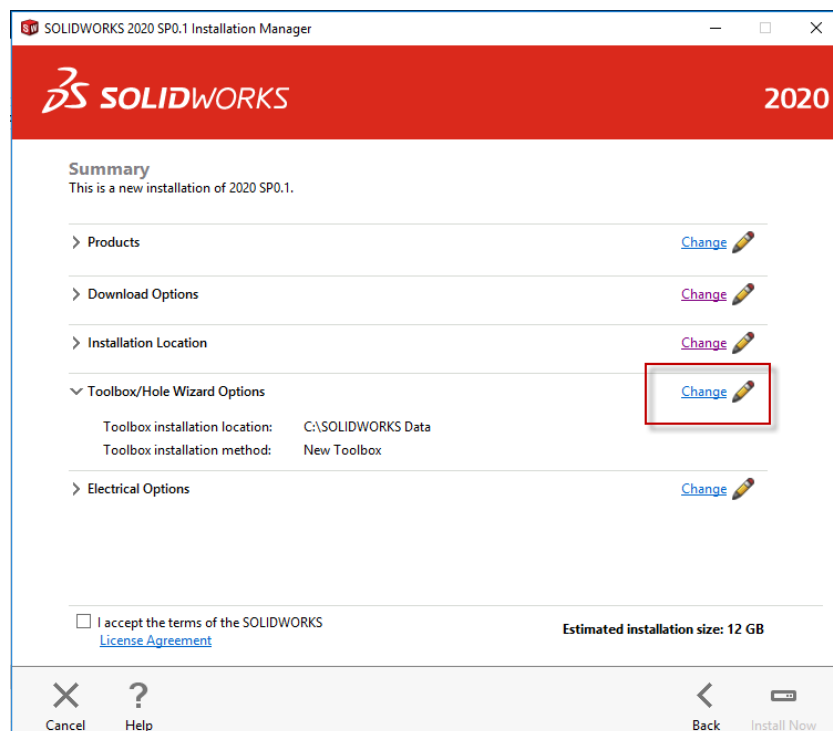


7. RECOMMENDED STEP

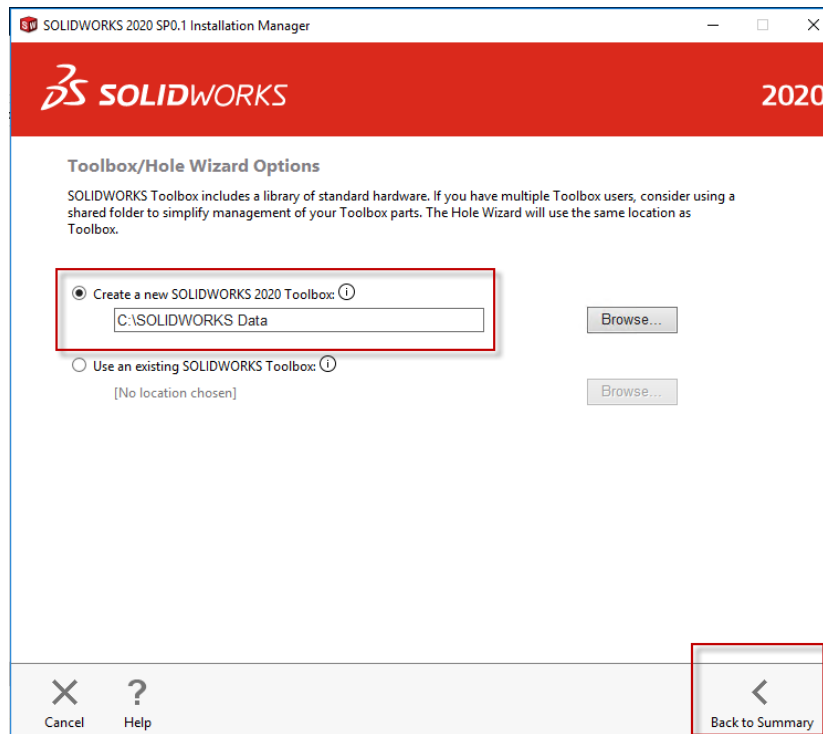
Changing the **Toolbox/Hole Wizard Options** is not required, but is recommended for ease of administration.

Change the Toolbox/Hole Wizard Options.

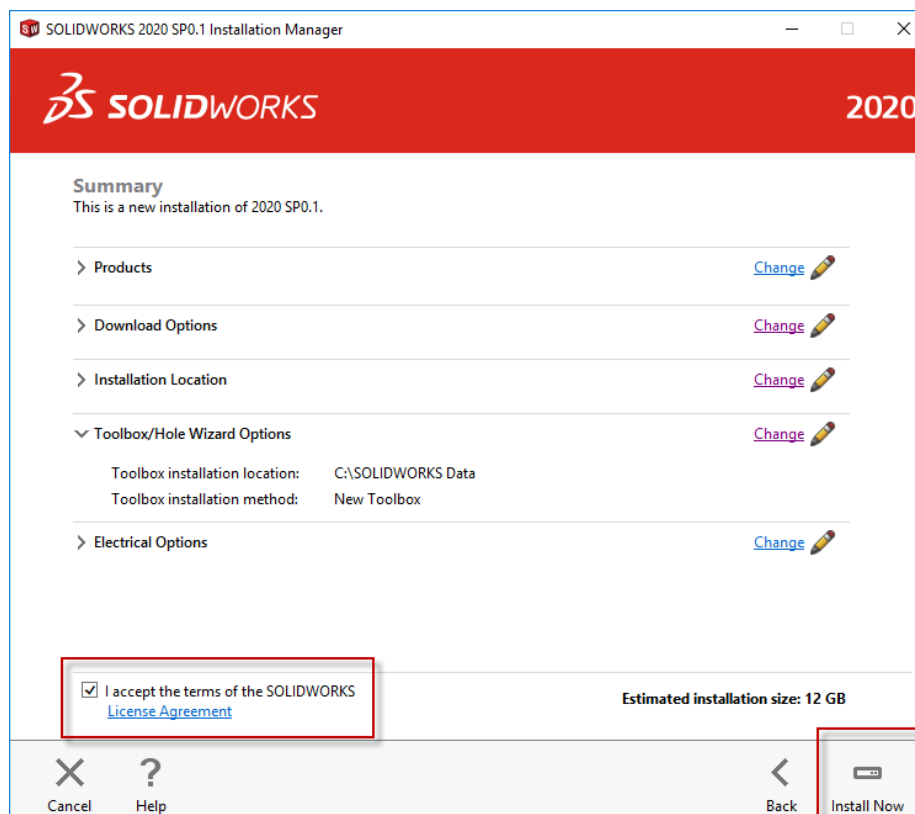
- a. Click **Change** next to the Toolbox/Hole Wizard Options.



- b. Type **2020** at the end of the path name and then click **Back to Summary**.

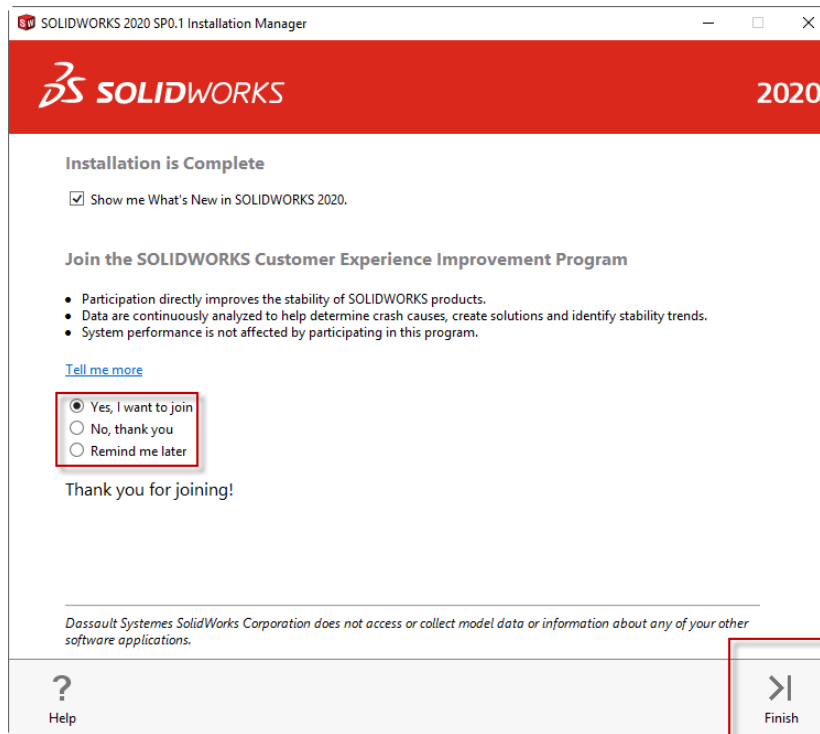


8. Once the summary options are all set, click the checkbox to accept the SOLIDWORKS terms and click **Install Now**.



9. Wait for the installation to complete.

10. If you would like to look at the 'What's New' document for the installation, make sure the checkbox is selected. Then, select **Yes** or **No** to participate in the **SOLIDWORKS Customer Experience Improvement Program**, and click **Finish**.

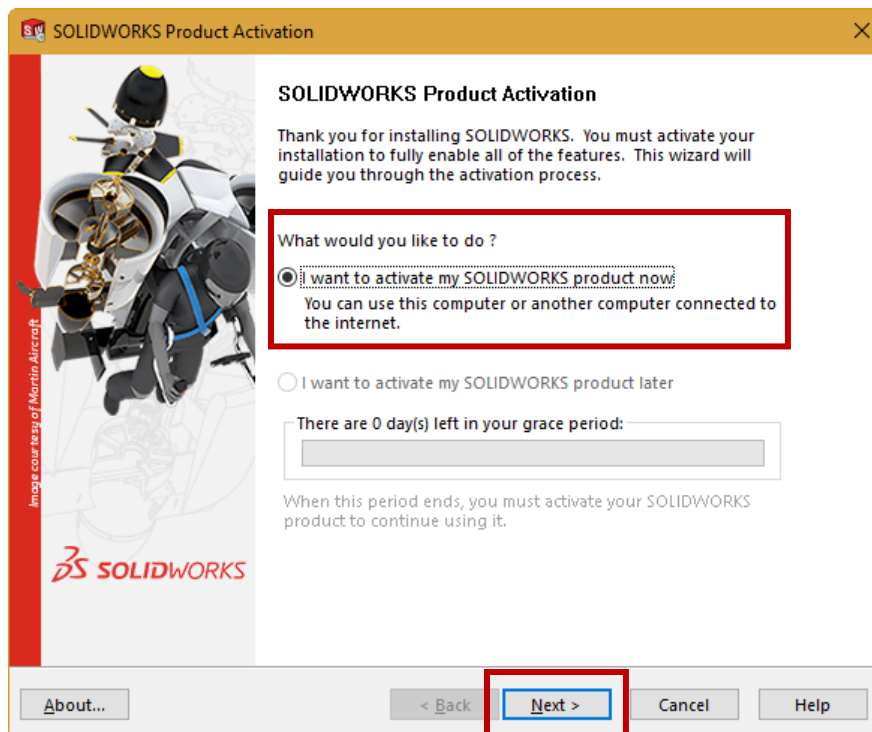


After Installing SOLIDWORKS

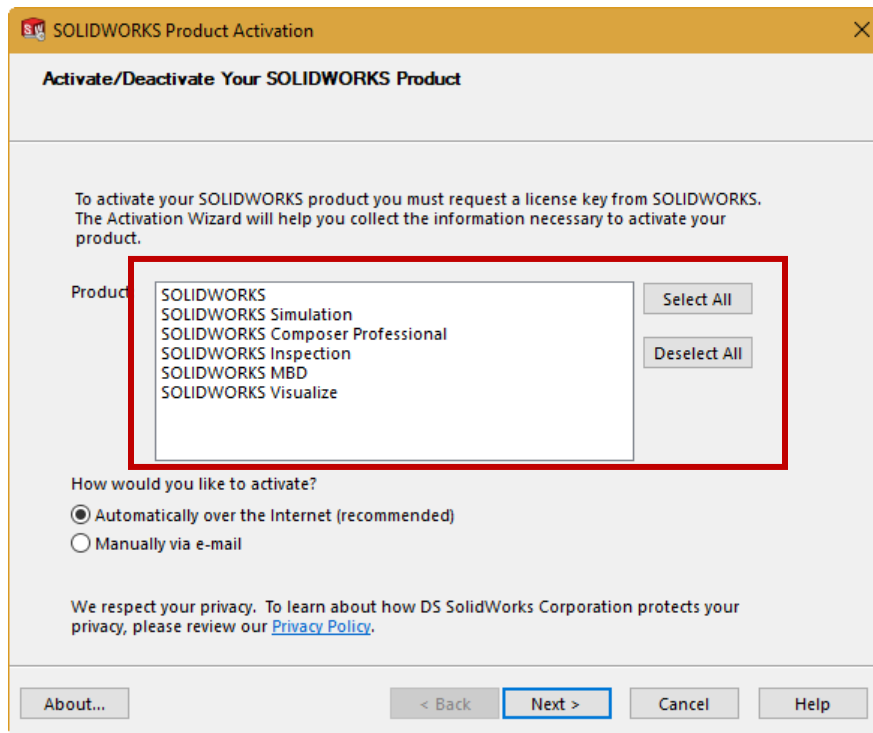
Before SOLIDWORKS will run on the individual computer, the license must be activated for that computer.

ACTIVATING A STANDALONE LICENSE

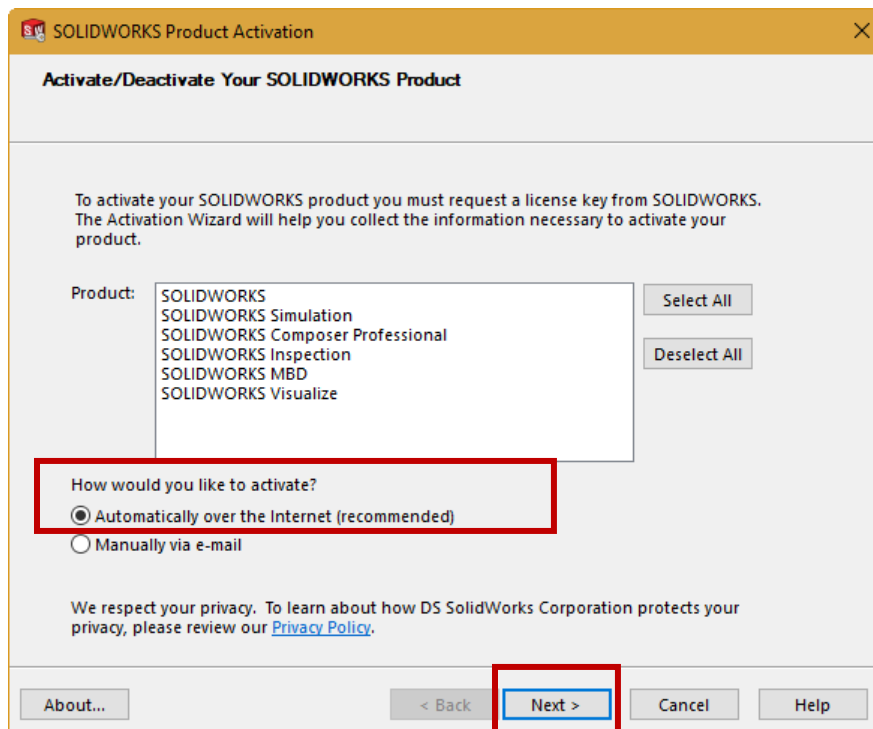
1. Launch SOLIDWORKS. The SOLIDWORKS Product Activation will open automatically. Choose **I want to activate my SOLIDWORKS product now** and click **Next**.
 - a. Activate my SOLIDWORKS product now will activate the license on the specified computer.
 - b. Activate my SOLIDWORKS product later will temporarily activate the license on the specified computer. This option should be used if you have already tried activating and are experiencing an issue. Please contact technical support to resolve the activation issue before the specific grace period ends.



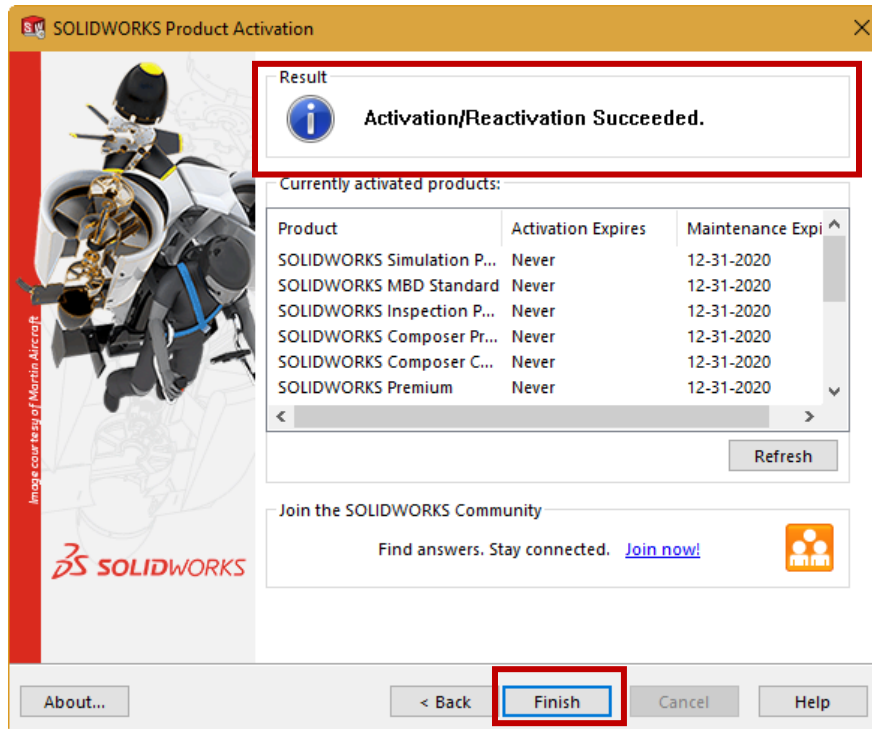
2. Select the product(s) you wish to activate.



3. You will be asked if you want to update over the internet or through email. It is recommended that you choose **Automatically over the Internet**. Then click **Next**.
- a. Automatically over the internet is used if the machine is connected to the internet. This activation will automatically occur over the internet.
 - b. Manually via e-mail is used if the machine does not have an internet connection. This activation generates a request file to send in an email to SOLIDWORKS and the response file from SOLIDWORKS is loaded into the SOLIDWORKS product activation.



- Once the process has completed, a dialog box will appear with the result **Activation/Reactivation Succeeded**. Click **Finish**.



- SOLIDWORKS is now activated and will launch.

NEED ADDITIONAL SUPPORT?

If you have an existing case, please contact the Application Engineer you are working with; otherwise **submit a new case online** or see our **local office listing** for additional contact information.